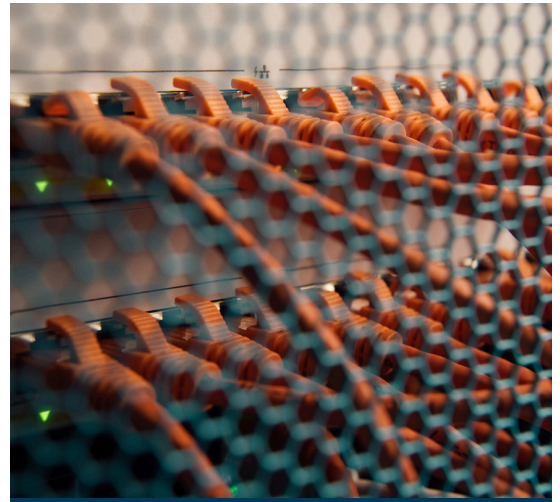


Mastering Networking and Wi-Fi: Essential Tips for IT Managers

As businesses increasingly rely on interconnected systems, the ability to effectively manage networks and Wi-Fi has become indispensable. Welcome to the next instalment in our 'IT Manager in a Box' series, Networking and Wi-Fi.

Please see our latest resource: an informative infographic packed with tips and tricks for Networking and Wi-Fi.



Understanding the Foundation: Networking Essentials

Before diving into the realm of Wi-Fi, it's crucial to grasp the fundamentals of networking. At its core, networking involves the interconnection of devices to facilitate communication and resource sharing. Whether it's a small-scale LAN (Local Area Network) within a single office or a sprawling WAN (Wide Area Network) connecting multiple locations globally, the principles remain the same.

Key concepts in networking include:

1. **Topology:** Encompassing elements such as firewalls, switches, routers, networking cabling, ports on the wall, and the physical locations of these devices. A well-designed topology plays a crucial role in optimising network performance and efficiency.
2. **Routing:** Determines the best path for data to travel between devices, directing traffic based on network addresses.
3. **Switching:** Directs data traffic within a network, ensuring it reaches its designated destinations by establishing pathways within the network. Think of it as seamlessly extending the capabilities of your network infrastructure.
4. **Desk Connections:** Desk connections are crucial components of modern office setups, facilitating seamless communication and connectivity. These connections typically entail ports on the wall linked to switch feeds via networking cables, ensuring a robust and stable network infrastructure.

By mastering these foundational elements, IT managers can lay a solid groundwork for efficient network management and troubleshooting.

Empowering Connectivity: Wi-Fi

Wi-Fi, short for Wireless Fidelity, has revolutionised how we connect to networks, offering flexibility and mobility without the constraints of physical cables. However, Wi-Fi networks entail more than just setting up a router and broadcasting signals. Effective Wi-Fi requires careful planning and consideration of various factors, including:

1. **Site Survey:** Conducting a thorough site survey to assess factors such as building layout, structural interference, and signal propagation. This helps determine optimal router placement and identify potential dead zones.
2. **Bandwidth Management:** Allocating bandwidth resources judiciously to ensure equitable distribution among users and prioritise critical applications. Techniques such as Quality of Service (QoS) can help mitigate network congestion and ensure smooth operation.
3. **Security Measures:** Implementing robust security protocols to safeguard against unauthorised access and data breaches. This includes secure authentication method and strong passwords.
4. **Scalability and Future-Proofing:** Designing Wi-Fi networks with scalability in mind, anticipating future growth and technological advancements. This may involve office-grade equipment capable of supporting a wider range for busy environments.



By addressing these considerations, IT managers can deploy Wi-Fi networks that deliver reliable performance, seamless connectivity, and robust security for users across diverse environments.

Equipped with the knowledge and skills outlined in this section of the 'IT Manager in a Box' series, IT professionals can confidently navigate the intricacies of networking and Wi-Fi. Our team of certified network engineers are available to address any network or Wi-Fi-related concerns you may have. Connect with us today at 01480 471 086 to discover how we can assist you.

Stay tuned for our next instalment 'IT Manager in a Box' series: Patch Management. As we delve deeper into the multifaceted world of IT management.

Should you have any questions or require further assistance, feel free to reach out. We're here to support your business every step of the way.

01480 471 086 | sales@idash.co.uk | www.idash.co.uk